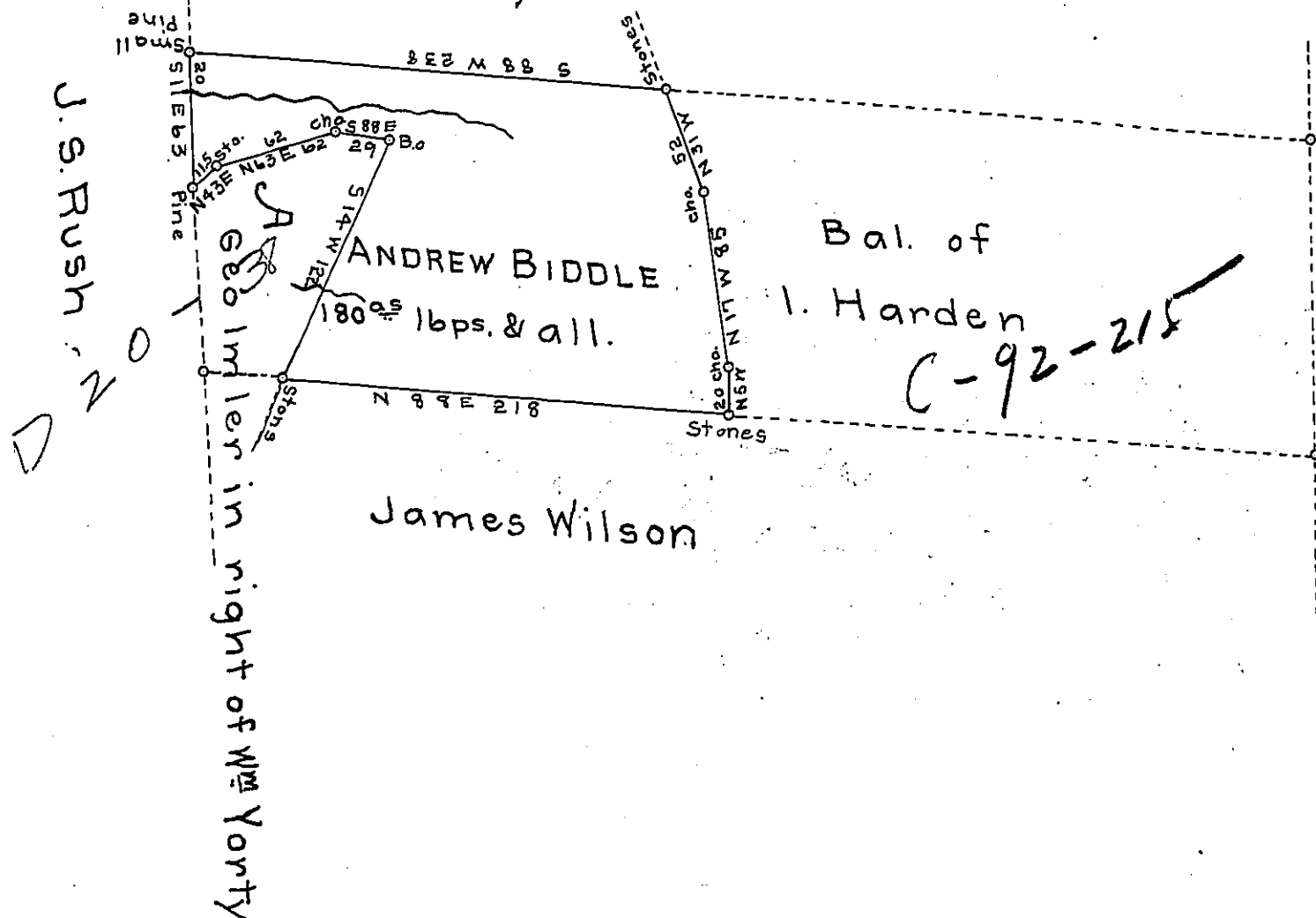


Adam Ketring in
Right of John Harden
now Snowberger



Situate on the West side of Tussey's Mountain in South
Woodberry township Bedford County Containing 180 ^{ac}
lb perches and the usual allowance of six per cent
for Road, Surveyed 27th July A.D. 1869 for Andrew Biddle
being a part of a larger tract of land originally Sur-
veyed on Warrant to Ignatius Harden dated the 19th
day of Sept. A.D. 1794.

To J.M. Campbell Esq^r } Sam! Ketterman C.S.
S.G. }

NOTE.. The piece marked A is claim- by Geo. Imler in
right of W^m Yorty and Patented Containing 40 or 50 ^{ac}
Sam! Ketterman.

IN TESTIMONY that the above is a copy of the original remaining on file in
the Department of Internal Affairs of Pennsylvania, made
conformably to an Act of Assembly approved the 16th day of
February, 1833, I have hereunto set my Hand and caused
the Seal of said Department to be affixed at Harrisburg,
this eleventh day of July 1905

Geo. A. P. Brown
Secretary of Internal Affairs.